



All values given in the table for the measuring force equal nominal values at electrical zero; max. deviation $\pm 25\%$. Valid for upright assembly position with downward oriented measuring bolt, as well as in static measuring.



Plastic sleeve marked with force related data



Shipping packaging



Accessories for TESA Probes

Spring Sets for Axial Probes

No	N
<i>Probes GT 22 and GTL 22</i>	
03260419	0,16
03260420	0,25
03260421	0,40
<i>Probes GT 21, GT 22, GTL 21, GTL 211, GTL 22 plus probe series 490</i>	
03260457	0,63
03260422	1,0
03260423	1,6
03260424	2,5
03260425	4,0

No	N
<i>Probes GT 27, GT 271 and GT 28</i>	
03260458	0,63
03260459	1,0
03260460	1,6
03260461	2,5
<i>Probes GT 61, GT 611 and GT 62</i>	
03260483	0,8
03260463	1,0
03260464	1,6
03260465	2,5



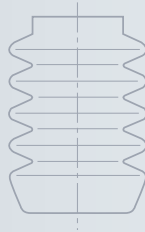
Nitrile: resistant synthetic sealing for normal use.

Viton: high-resistance synthetic sealing used where probes are permanently exposed to cooling and lubricating agents.

Safety rings plus washer.



Shipping packaging



Spare Bellows for Axial Probes

Complete set with safety ring and washer

No	
<i>Probes GT 21, GT 22, GTL 21, GTL 211, GTL 22 plus probe series 490</i>	
03260468	nitrile
03260470	Viton
<i>Probes GTL 212 and GTL 222</i>	
03260489	Viton

No	
<i>Probes GT 27, GT 271, GT 28, GT 61, GT 611 plus probe series GT 62</i>	
03260491	Viton
<i>Probes GT 272, GT 282, GT 612, GT 622</i>	
03260490	Viton

Bellows supplied individually

<i>Probes GT 43 and GT 44</i>	
037608	Viton



For high accuracy requirements, we recommend to adjust each part of your measuring equipment all together



Shipping packaging

Extension cable

No	m
03240201	1
03240202	2
03240203	3
Other cable lengths available on request	

