



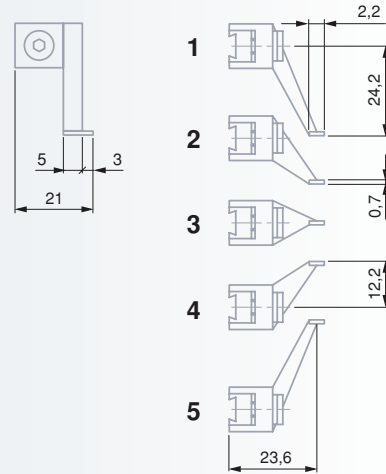
Probe inserts with offset measuring face

Probe inserts with a flat, right-angle measuring face in tungsten carbide, whether centred or offset

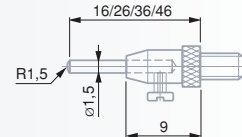
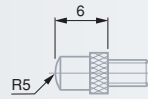
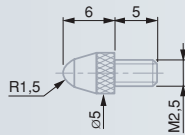


As shown opposite

02630047	1
02630048	2
02630049	3
02630050	4
02630051	5



Measuring Inserts for Axial Probes, Dial Gauges and the Like Models with a M2,5 mounting thread



Standard probe inserts with a ball tip



L mm

03510001	Steel	6
03510002	Carbide	6

Probe inserts with a spherical measuring face



R mm

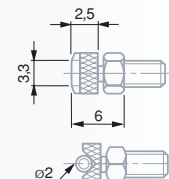
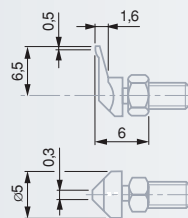
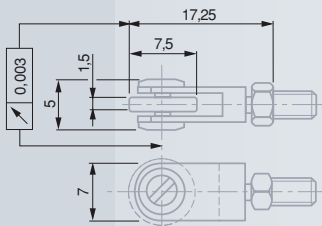
03510101	Steel	5
03510102	Carbide	5

Probe insert with 4 interchangeable steel pins. Spherical face, R = 1,5 mm



L mm

03510201	Steel	16, 26, 36, 46
----------	-------	----------------



Probe inserts with a ball-bearing steel roller.
Counternut for radial alignment.



Shape

03560010	Steel	cylindrical
03560011	Steel	domed

Off-centre probe insert (A) with pointed measuring face.
Counternut for radial alignment.



A mm

03510401	Steel	6,5
----------	-------	-----

Probe insert with cylindrical measuring face. Counternut for radial alignment.



03510502	Carbide
----------	---------

