

INTERRAPID 312 Regular Models

| No | mm | mm | mm | mm | mm |
|-----------|-------|-----|------|------------|------|
| 074111366 | 0,01 | 1,6 | 37,5 | 0 ÷ 40 ÷ 0 | 16,5 |
| 074111367 | 0,01 | 1,6 | 30 | 0 ÷ 40 ÷ 0 | 16,5 |
| 074111368 | 0,002 | 0,4 | 37,5 | 0 ÷ 10 ÷ 0 | 15,2 |
| 074111369 | 0,002 | 0,4 | 30 | 0 ÷ 10 ÷ 0 | 15,2 |

| No | in | mm | mm | mm | mm |
|-----------|--------|-------|-----|------------|-------|
| 074111370 | 0.0005 | 0.060 | 1.5 | 0 ÷ 15 ÷ 0 | 0.65 |
| 074111371 | 0.0005 | 0.060 | 1.2 | 0 ÷ 15 ÷ 0 | 0.65 |
| 074111965 | 0.0005 | 0.060 | 1.5 | 0 ÷ 15 ÷ 0 | 2.675 |
| 074111374 | 0.001 | 0.060 | 1.2 | 0 ÷ 15 ÷ 0 | 0.65 |
| 074111372 | 0.0001 | 0.016 | 1.5 | 0 ÷ 4 ÷ 0 | 0.65 |
| 074111373 | 0.0001 | 0.016 | 1.2 | 0 ÷ 4 ÷ 0 | 0.65 |



Rotating dial

Very low measuring force (see table on page G-7)

Lever system with friction drive to prevent overload

Accuracy: see table on page G-7

Supplied in a plastic case along with:
1 steel insert with a 2 mm diameter, hardened.
1 key No. 01860307

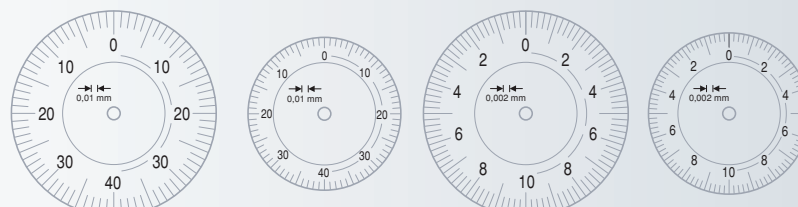
Declaration of conformity



INTERRAPID 312 Perpendicular Models

| No | mm | mm | mm | mm | mm |
|-----------|------|-----|------|------------|------|
| 074111375 | 0,01 | 1,6 | 37,5 | 0 ÷ 40 ÷ 0 | 16,5 |
| 074111376 | 0,01 | 1,6 | 30 | 0 ÷ 40 ÷ 0 | 16,5 |

| No | in | mm | mm | mm | mm |
|-----------|--------|-------|-----|------------|-------|
| 074111377 | 0.0005 | 0.060 | 1.5 | 0 ÷ 15 ÷ 0 | 0.65 |
| 074111378 | 0.0005 | 0.060 | 1.2 | 0 ÷ 15 ÷ 0 | 0.65 |
| 074111958 | 0.0005 | 0.060 | 1.5 | 0 ÷ 15 ÷ 0 | 2.675 |
| 074111379 | 0.001 | 0.060 | 1.2 | 0 ÷ 15 ÷ 0 | 0.65 |
| 074111957 | 0.0001 | 0.016 | 1.5 | 0 ÷ 4 ÷ 0 | 0.65 |



074111366

074111367

074111368

074111369