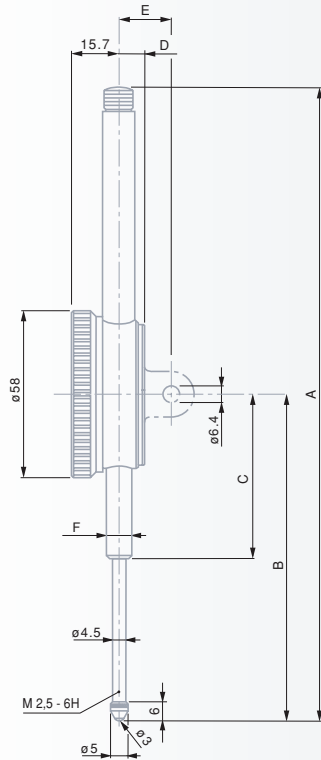


Long Range Precision Dial Gauges

0,01 mm dial readout / 58 mm dial diameter



mm	30 mm	50 mm	100 mm
A	148	228	390
B	88	117,2	211,6
C	50	60	103,6
D	10	9	9
E	20	19	19
F	Ø 8h6	Ø 8h6	Ø 8h6



EN ISO 463
Factory standard



0,01 mm



1,5 mm



Rotating dial with or without dial lock



Full-metal dial casing. Stainless steel fixing shank and plunger, hardened.



Adjustable tolerance marks. M2,5 mounting thread for the measuring insert.



3 mm dia. ball tip, already mounted.



Cardboard box



Identification number



Inspection report with a declaration of conformity



mm

mm

mm

mm

COMPAC dial gauges

712	0,01	30	30,5	●	–	1	0 ÷ 50 ÷ 100
722	0,01	50	50,5	●	–	1	0 ÷ 50 ÷ 100
732	0,01	100	100,5	●	–	1	0 ÷ 50 ÷ 100

MERCER dial gauge

01416039 252-1	0,01	30	30,5	●	●	1	0 ÷ 50 ÷ 100
----------------	------	----	------	---	---	---	--------------

Permissible limits of a metrological characteristic (MPE/MPL)

Deviation span	20 µm	25 µm	30 µm
Total deviation span	25 µm	30 µm	35 µm
Repeatability limit	3 µm	3 µm	3 µm
Max. hysteresis	5 µm	5 µm	8 µm
Measuring force	≤ 2,2 N	≤ 2,5 N	≤ 3,2 N