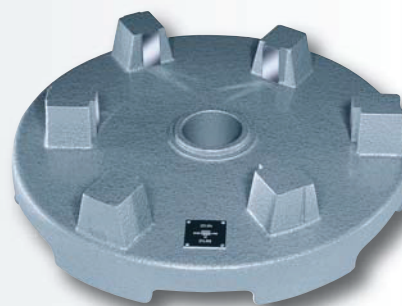






TESA Setting Rings and Setting Masters



			
	mm	µm*	µm**
<i>Setting rings</i>			
00843200	4	1,5	1,5
00843201	5,5	1,5	1,5
00840114	6	1,5	1,5
00840101	8	1,5	1,5
00840115	8,5	1,5	1,5
00840102	10	1,5	1,5
00840103	11	1,5	1,5
00840116	12,5	1,5	1,5
00840104	15	1,5	1,5
00840105	17	1,5	1,5
00840117	17,5	1,5	1,5
00840106	25	1,5	1,5
00840107	35	2	2
00843230	45	2	2
00840108	50	2	2
00843239	60	2	2
00840109	70	2	2
00840118	85	2	2
00840110	90	2	2
00840111	110	2,5	2,5
00840112	125	2,5	2,5
00840113	175	2,5	4
<i>Setting master</i>			
00843101	225, 275	—	6

* Making no allowance for a rim of 1 mm.

** All listed values are determined through a 2-point measurement taken at half-height of the setting ring. The measuring direction is marked with 2 strokes. The measured actual dimension is engraved on every setting master.